

FINAL RULE

**CHILD NUTRITION PROGRAMS:
MEAL PATTERNS CONSISTENT
WITH THE 2020-2025 DIETARY
GUIDELINES FOR AMERICANS**





KEY FACTORS

- **Establish practical, durable, long-term standards**
- **Make gradual changes that set program operators up for success**
- **Incorporate latest nutrition science and public input**
- **Result in nutritious meals that children will enjoy**



ADDED SUGARS

PRODUCT BASED LIMITS

SBP & NSLP - JULY 1, 2025

CACFP - OCTOBER 1, 2025

- **Breakfast Cereal :** No more than 6g added Sugars per dry ounce
- **Yogurt:** No more than 8 g of added sugar per 4 oz
- **Flavored Milk:** No more than 10g of added sugar per 8 fluid ounces



WEEKLY LIMITS

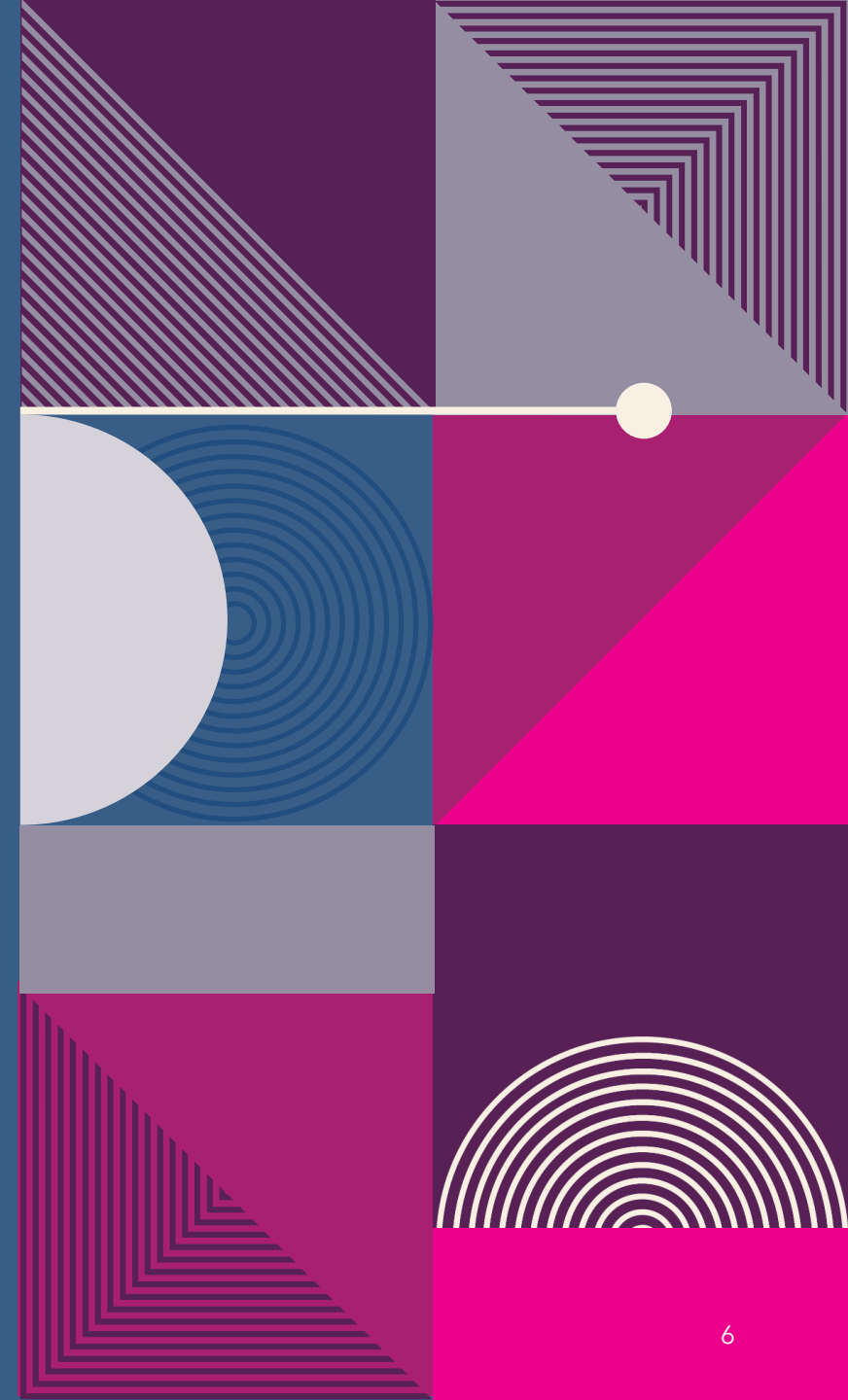
SBP & NSLP - JULY 1, 2027

- Limit added sugars to less than 10% of calories per week for SBP & NSLP
- Weekly Limits are in addition to product based limits



WHERE IS INDUSTRY AT ?

- **Yogurt**
 - **General Mills/Trix - Good To Go**
 - **Upstate Farms - Good To Go**
 - **Country View - Good To Go**
- **Milk**
 - **Kemps 1% Chocolate milk currently at 11g added sugar - Will not be changing**
 - **Nov & Dec 2024 IFD - 913 cases to Schools**



POST AKA MALT-O-MEAL

Some currently compliant more to come in July

Bowl Pack

- **Cinnamon Toasters**

Crispy Rice **GF**

Frosted Shredded Wheat

Honey Scooters

Marshmallow Mateys

Corn Flakes GF

Honey Bunches of Oats

Frosted Strawberry Shredded

Raisin Bran

Scooters



POST AKA MALT-O-MEAL

Some currently compliant more to come in July

Cereal Cup

- **Cinnamon Toasters**

Honey Bunches of Oats

Frosted Shredded Wheat

Honey Scooters

Bulk

Cinnamon Granola

Marshmallow Matey's

Honey Scooters

Frosted Strawberry Shredded



GENERAL MILLS

CEREAL CUPS - Some currently compliant more to come in July

Buy American Compliant 

- **25% less sugar - Lucky Charms**
- **25% less sugar - Cocoa Puffs**
- **25% less sugar - Trix**
- **25% less sugar - Cinnamon Toast Crunch**
- **Blueberry Chex**
- **Cinnamon Chex**
- **Honey Cheerios**



GENERAL MILLS

Bowl Pack - Some currently compliant more to come in July Buy American Compliant



- **25% less sugar Lucky Charms Kix**
- **25% less sugar Cocoa Puffs**
- **25% less sugar Trix**
- **25% less sugar Cinn Toast Crunch**
- **Blueberry Chex**
- **Cinnamon Chex**
- **Honey Cheerios**
- **Cheerios**



Total Raisin Bran
Country Corn Flakes

Corn Chex
Rice Chex
Multi Grain Cheerios

GENERAL MILLS

Bulk Cereal - Some currently compliant more to come in July

Buy American Compliant 

- **Corn Chex**
- **Rice Chex**
- **Cheerios**
- **Honey Cheerios**
- **Kix**



KELLOGG'S

Some currently compliant more to come in July

Buy American Compliant



POUCH PACK CEREAL

- **Froot Loops**
- **Apple Jacks**
- **Granola Crunch Clusters (2 OEG)**
- **Kashi Strawberry Banana Smoothie Loops**

BULK

- **Low Fat Granola Crunch Clusters**

Kellogg's®

KELLOGG'S

Some currently compliant more to come in July

Buy American Compliant



BOWL PACK - 1 OEG

- Froot Loops
- Apple Jacks
- Frosted Mini Wheats
- Raisin Bran

CUP - 2 OEG

Frosted Mini Wheats

Frosted Mini Wheats Cocoa

Kellogg's®

GILSTER MARY LEE /HOSPITALITY

Some currently compliant more to come in July

BULK 4/35 oz - WG

- **40% Bran Flakes**
- **Frosted Mini Wheats**
- **Whole Wheat Flakes**
- **Raisin Bran**
- **Shredded Wheat**
- **Corn Puffs**
- **Toasted Oats**

BULK 4/32 oz - WG

- Corn Flakes**
- Corn Puffs**
- Shredded Wheat Bites**
- Raisin Bran**
- Toasted oats**
- Honey Nut Toasted**
- Apple Cinnamon Toasted Oats**



COMING - STAY TUNED

Many K12 manufacturers are working on reducing added sugars in breakfast foods to assist with the weekly totals that come on July 1 2027

IFD will trade out items as they come available and communicate

ADDED SUGARS - MENU FLEXIBILITY

- **July 1, 2025**
- **Removes the requirement for schools to offer 1 OEG. each day at breakfast**
- **SFA may offer m/ma, grains or combination of both to meet the requirements**



FLAVORED MILK



WHERE IS INDUSTRY AT

- **Chocolate Skim Meets the regulations**
- **Kemps will NOT be reformulating the 1% Chocolate Milk that sits at 11g Added Sugar (needs to be at 10g)**

An abstract geometric design on the left side of the page. It features a grid of squares and rectangles with various patterns and colors. The top-left square is bright pink with a white semi-circle of concentric lines. The middle-left square is grey. The bottom-left square is dark purple with a white semi-circle of concentric lines. The middle-right square is yellow with a dark purple diagonal line. The bottom-right square is blue. A white horizontal line with a circle at its end extends from the top-left square towards the right. The background is a solid magenta color.

WHOLE GRAINS



MAINTAIN CURRENT REQUIREMENTS

DEFINITION

- **Whole Grain-Rich** is the term designated by AFNS to indicate that the grain content of a product is between 50% and 100% Whole Grain with the remaining grains being enriched

PERCENTAGE

- **At least 80%** of the weekly grains offered for NSLP & SBP must meet the WG-rich criteria

SMART SNACKS

- **WGR entrees** offered as part of reimbursable school meal may qualify as an "entrée" item" when sold as a "smart Snack" entrée item for SBP



SODIUM

HERE'S WHAT'S COMING

- **July 1, 2027**
 - **NSLP a 15% reduction from current sodium limits**
 - **SBP a 10% reduction from current sodium limits**
- **IFD is switching out products as they become available**

Reductions are based on the Grade level criteria





BUY AMERICAN

GRADUAL PHASES

Limited circumstances for Non-Domestic food purchases

- The product is listed on the Federal Acquisitions Regulations (FAR) Non-available articles list and/or is not produced or manufactured in the US in sufficient and reasonably available quantities of a satisfactory quality; or
- Competitive bids reveal the costs of a U.S. product are significantly higher than the non-domestic product

Timeline	July 1, 2025	July 1, 2028	July 1, 2031
Non-Domestic food purchases cap	10%	8%	5%

THINGS TO REMEMBER

- **USDA Commodity foods are not considered commercial - so they don't count**
- **All items on SEPDS meet Buy American Criteria**
- **Growing seasons change so we cannot denote those items with the BA icon / Attribute**
- **Buy American applies to Food item only**
- **Make sure you have separate accounts for non-program accounts**



LOOK AT THE BIG PICTURE



- **Look beyond your Prime Vendor**
 - **Milk**
 - **Bread**
 - **National Pizza Chain**
 - **Local Vendors**
 - **Beverage Contracts**

BUY AMERICAN RESOURCES



- **LunchByte News - USDA Buy American webinar**
- **LunchByte News - FAR List**
- **DPI - Buy American**
- **MDE - Buy American**
- **IFD website icon / Attribute**
- **NSRP - Buy American letters**

PARTNERSHIP & TEAM WORK

- **We do not have all the answers**
- **IFD Departments are diligently working on what we can do to assist with Buy American criteria**
- **We are looking at products and talking to our suppliers to source options**
- **Looking for alternate Frozen Vegetables - \$\$**
- **All new products being coded BA as applicable**
- **Talking to MDE, DPI & USDA to share concerns**
- **Talk to us - Lets work on this Together**

THANK YOU

LED Nutrition
Services